

USDA-NRCS Success Stories with Grand Portage



Opportunities for Tribes to Contract with USDA NRCS & FSA for Forestry Projects



Webinar: August 27, 2025

Best Practices and Success Stories

Tim Miller, Reservation Forester, Grand Portage Band of Lake Superior Chippewa

Ben Ellefson, Civil Engineering Technician, USDA-NRCS, Duluth, MN



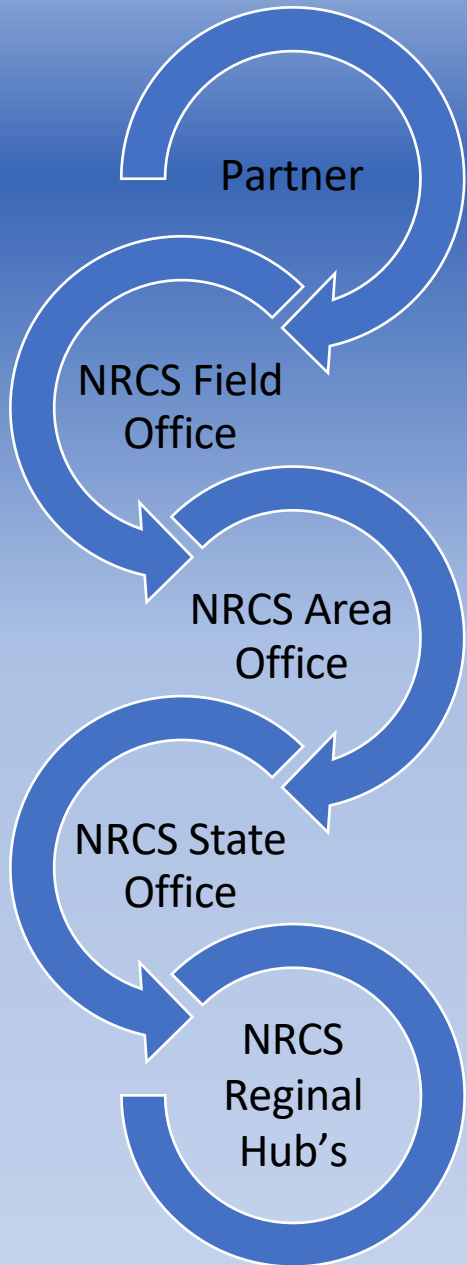
History of Relationship - Grand Portage and NRCS

➤ Timeline of the relationship

- 1993 - Grand Portage first request for technical assistance
- 1990's and 2000's – NRCS assisted on multiple Tribal projects
- Late 2000's - District Conservationist introduces forest practices to Grand Portage
- Currently – working on approximately a dozen projects together
- Throughout this time, there has been multiple staff turnover for both Grand Portage and NRCS

➤ Support of multiple levels from Tribe and NRCS

NRCS Working Together....



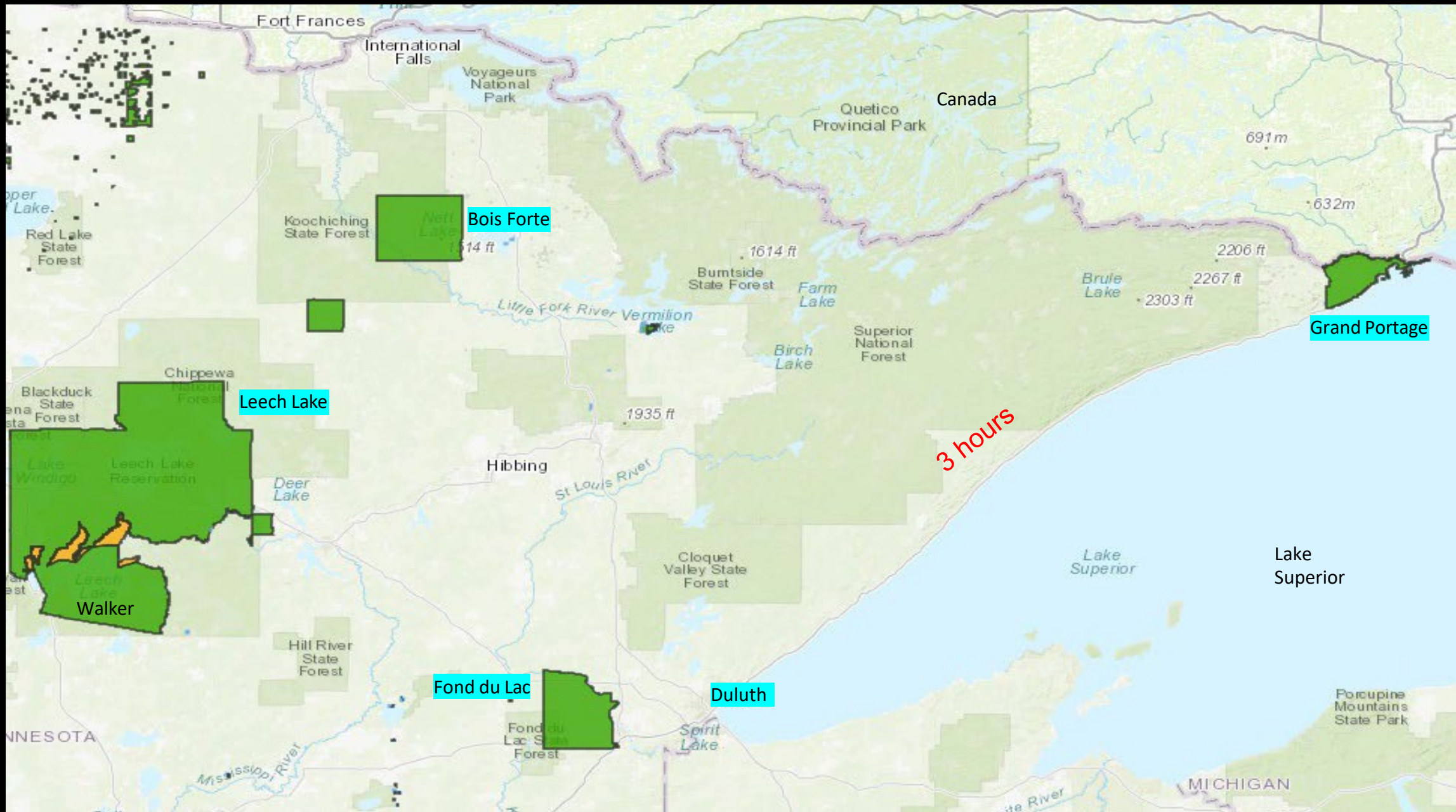
- Tribal Liaison
- Administrative
- Forestry
- Engineering
- Conservationist
- Soil Scientist
- Geologist
- GIS
- Program

Making it Work...

...Challenges

- Travel distance to project
- Technical expertise
- Funding the project
- Tying the resource concern to NRCS practices
- Time to develop start to finish





Fitting the NRCS Practice to the Project

Conservation Practice Standards – Resource Concerns

Field Office Technical Guide (FOTG)



Field Office Technical Guide



Help



Log In

Welcome to the

NRCS Field Office Technical Guide

Minnesota (MN)



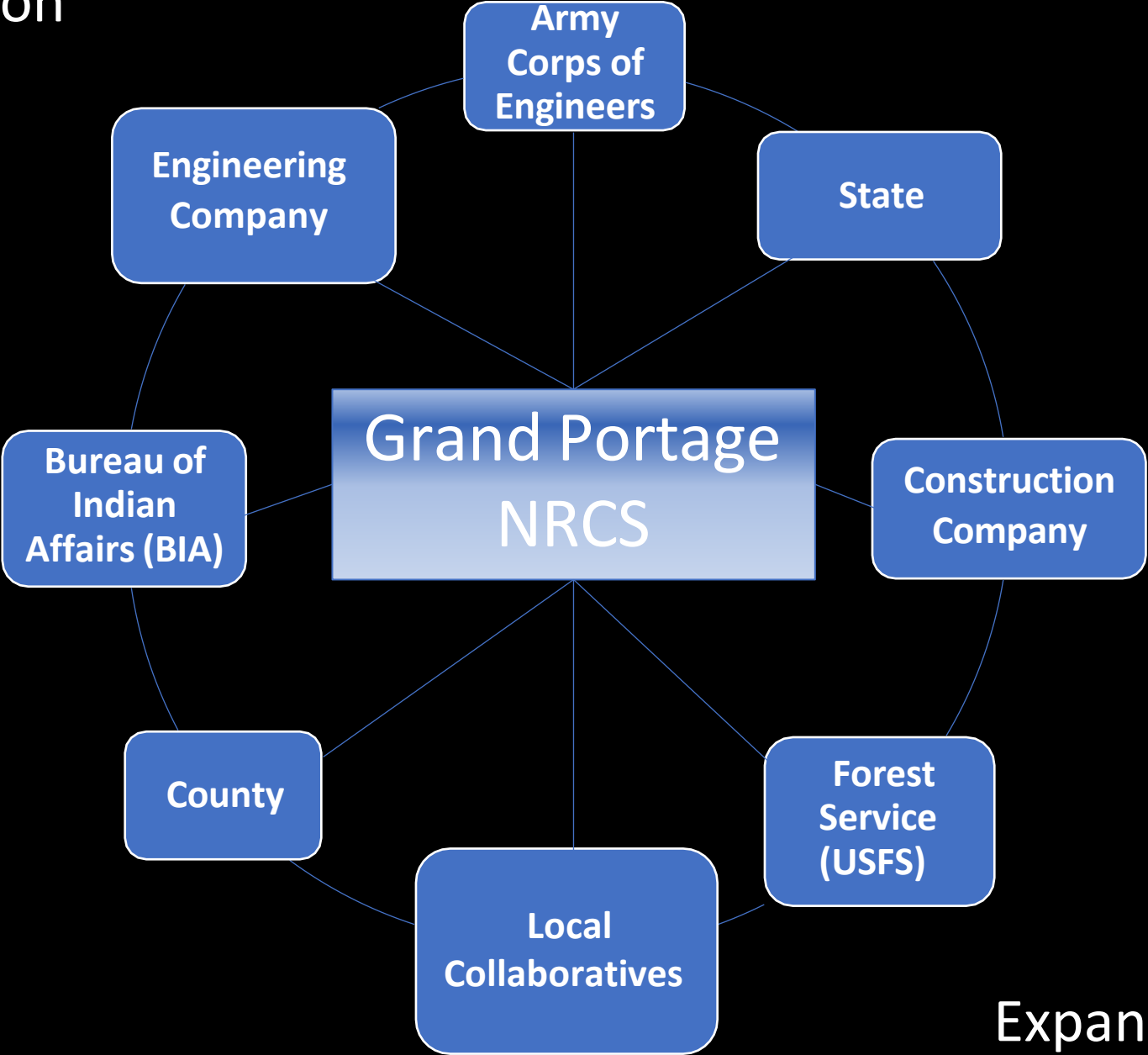
Making it Work...

...Successes

- NRCS Technical support and funding
- Communication and collaboration
- Build partner relationships
- On-site project management
- Project start to finish
- Continued partnership and relationship



External Collaboration



Expanded Relationships

Project Success Stories

- Aqua Culture Hatchery
- Forest Management
- Boat Landing
- Bison Grazing
- Large Erosion Control around Infrastructure
- Access Roads
- Streambank and Shoreline Stabilization
- Water Control Structures (Manoomin Restoration)
- Stream Crossing
- Emergency Relief for Federal Owned Roads (ERFO)
- Opportunities to share successes stories



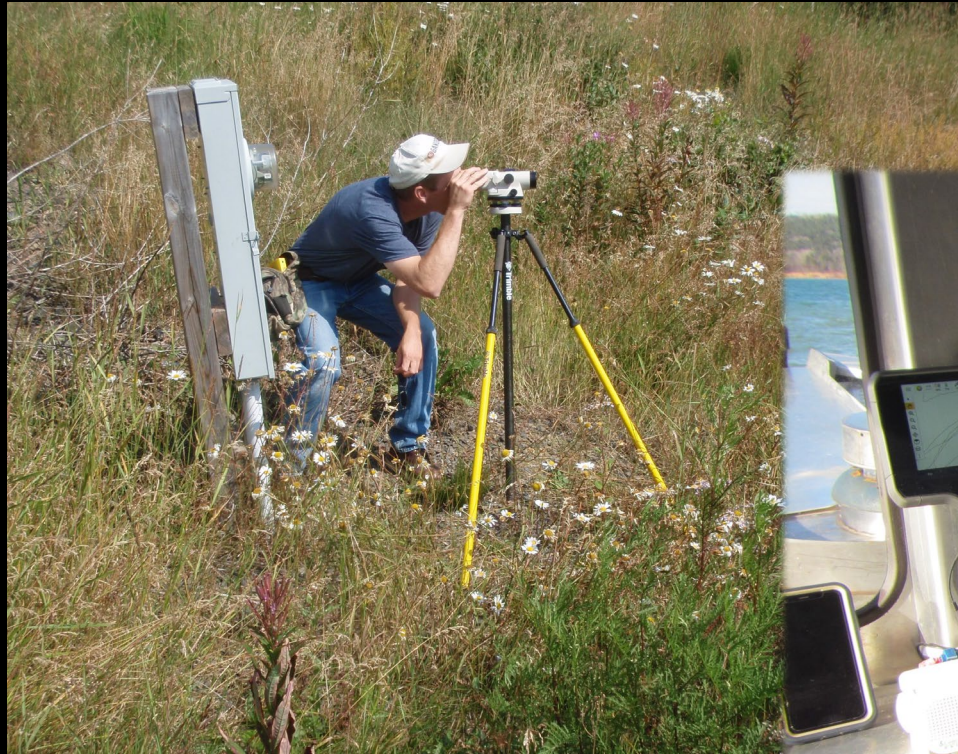


Technical Assistance

Financial Assistance

Technical and Financial Assistance

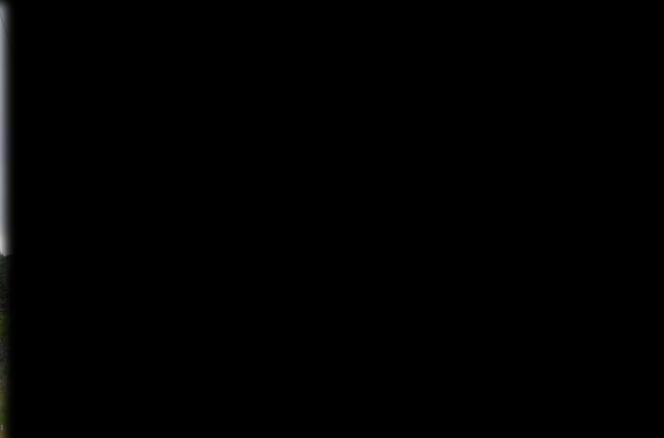
Project Investigation & Inventory



Sub Surface Investigation



Construction Inspection



Project Design, Plan Set, Specifications

U.S. DEPARTMENT OF AGRICULTURE NATURAL RESOURCES CONSERVATION SERVICE

Detail Plans for GRAND PORTAGE RESERVATION RIVER BRIDGE ABUTMENT PROJECT Grand Portage Reservation

Project DA= 15.8 SM (10,112 AC)
Design $Q_{100} = 900$ CFS
50' Bridge Span x 14' deck width
Bridge live load of 166,300 LBS

Minnesota specifications for conservation practices apply for all materials and construction work, these specifications are part of this plan.

NOTE: Changes in the drawings or specifications must be authorized by the owner and the NRCS representative with the proper approval authority.

The owner is responsible for obtaining land rights and local, state, and federal permits or other permission necessary to perform and maintain the practice.

Before start of construction, the owner(s) of any utilities involved must be notified. The excavator is responsible for giving notice by calling "opher State One-Call" at (651) 454-0002 (twin cities metro area) or (800) 252-1166 (all other locations) at least 48 hours prior to any excavation.

GSOC Number _____

INDEX OF DRAWINGS	
Sheet Number	Title
1	Cover Sheet
2	Plan View
3	Profile
4	Cross Sections
5	Concrete Footing Detail

CONSTRUCTION SPECIFICATIONS	
No.	Item
MN-2	Clearing and Grubbing
MN-5	Pollution Control
MN-6	Seeding, Sprigging and Mulching
MN-11	Removal of Water
MN-21	Excavation
MN-24	Drainfill
MN-32	Structure Concrete (+ Reinforcing Steel)
MN-61	Rock Riprap
MN-95	Geotextile

MATERIAL SPECIFICATIONS	
No.	Item
MN-521	Aggregates for Drainfill and Filters
MN-523	Rock for Riprap
MN-592	Geotextile

SUMMARY OF ESTIMATED QUANTITIES		
No.	Unit	Item
1	JOB	Mobilization
1	JOB	Pollution Control
0.2	AC	Clearing and Grubbing
1	JOB	Dewatering
600	CY	Excavation, Common
170	CY	GP or GW Fill (MN-24 Drainfill)
360	CY	Rock Riprap
430*	SY	Geotextile
50	CY	Roadfill (MN-24 Drainfill)
4.7	CY	Concrete
521	LBS	Reinforcing Steel
16	EACH	Anchor Bolt Assembly (see sheet 5 of 5)
0.1	AC	Seed, Fertilizer, Mulch
35	SY	Erosion Control Blanket

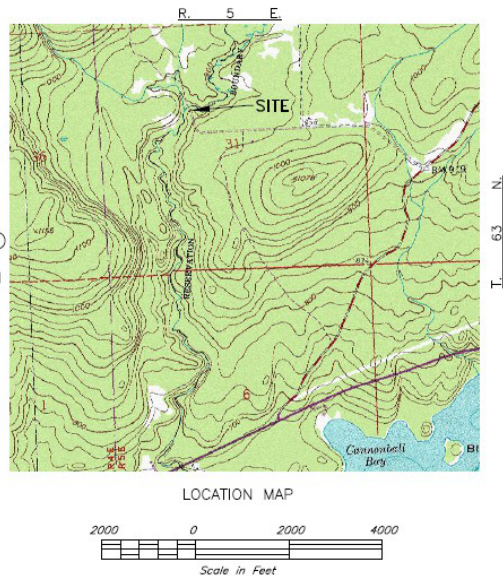
* Quantity does not include overlaps

CONSTRUCTION CERTIFICATION

This installation meets NRCS standards and specifications. Yes No
Inspected by: _____
Certified by: _____
Date: _____

I have reviewed and understand the plans and specifications and agree to complete the work accordingly. Failure to meet these plans and specifications may jeopardize any cost share applied for. I understand that it is my responsibility to secure all necessary permits and licenses, and to complete the work in accordance with all local, state, and federal laws. Modifications of these plans or specifications must be approved by the natural resources conservation service before installation. I assume responsibility for negotiations and agreements with the contractors.

COOPERATORS SIGNATURE _____ DATE _____



Designated	M. PEARSON	Date	9/20/17
Drawn	B. ELLISON	Checked	9/20/17
Approved	M. PEARSON	Approved	9/20/17
Grand Portage Reservation			
COVER SHEET			
RESERVATION RIVER			
BRIDGE ABUTMENT PROJECT			
United States	Department of	Agriculture	
USDA	Natural Resources	Conservation Service	
File Name	Grand Portage Bridge Abutment Project		
Eng. Job Class	V		
Date	9/20/17		
Sheet	1 of 5		

USDA
NATURAL RESOURCES CONSERVATION SERVICE
MINNESOTA

CONSTRUCTION AND MATERIAL
SPECIFICATIONS
FOR
GRAND PORTAGE RESERVATION
RESERVATION RIVER BRIDGE ABUTMENT PROJECT

Section 31 T 63 N R 5 E

GRAND PORTAGE LAKE SUPERIOR
BAND OF CHIPPEWA

Storm/Flood Damage Repair



Storm/Flood Damage Repair





Forest Inventory Crew





Technical Assistance
Financial Assistance
Technical and Financial Assistance

Forestry Practices



Prescribed Fire Practices





Technical Assistance
Financial Assistance

Technical and Financial Assistance

Tribal Access for Moose Habitat Improvement



Stream Restoration

Before



After



Bison Grazing



Aquaculture Hatchery



Aquaculture Pond



Fresh Water Intake

Access and Landing



Erosion Control



Manoomin Habitat Restoration



MT MAUDE
MAHNOMIN (WILD RICE)
RESTORATION PROJECT
GRAND PORTAGE BAND OF L.S. CHIPPEWA

PARTNERSHIPS:	BUILT BY:
USDA NRCS DULUTH	GRAND PORTAGE CONST.
BIA CIRCLE OF FLIGHT	COMPLETED 2003
USFWS ASHLAND FRO	
DUCKS UNLIMITED	



Streambank and Shoreline Protection



Aug 15, 2018 ·

*With collaboration between **Grand Portage Forestry**, **Grand Portage Construction** and the **NRCS**, this bridge will help us access portions of the reservation that are in need of Forest Management.*

· **Grand Portage Forestry**



<https://www.youtube.com/watch?v=1TKeZGkaRXk>

(8-minute bridge setting video flown with a drone)



Working...



...Together



Helping People Help the Land